

Part No.: RS16W0860-S

Power divider/Combiner 16 Way SMA 50Ω 0.8 to 6GHz

电气特性 Electrical:

工作频率 Frequency Range: 0.8-6GHz

插入损耗 Insertion Loss: $\leq 4.8\text{dB}$

驻波 VSWR: 1.7 : 1

隔离 Isolation: $\geq 16\text{dB}$

幅度平衡 Amplitude Balance: $\leq \pm 1.0\text{dB}$

相位平衡 Phase Balance: $\leq \pm 10^\circ$ (Typ)
 $\leq \pm 15^\circ$ (MAX)

耐功率 Power Handling: 30 Watt

阻抗 Impedance: 50 OHMS

机械特性 Mechanical:

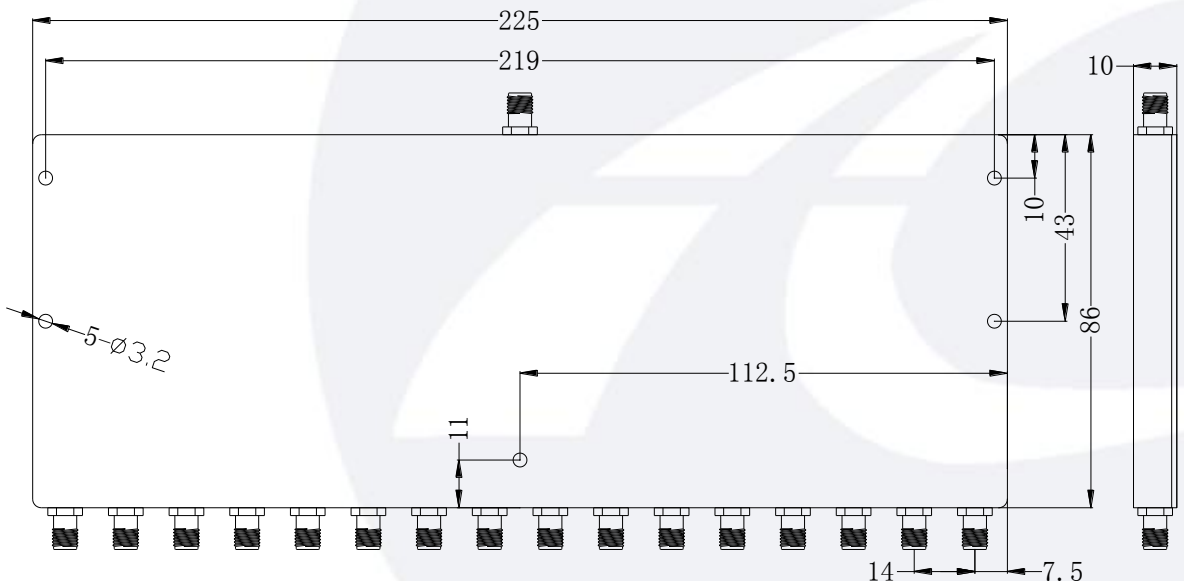
温度范围 Temperature Range: $-55^\circ\text{C} - +85^\circ\text{C}$

接口 Connectors: SMA-Female

相对湿度 Relative Humidity: 0 ~ 90%

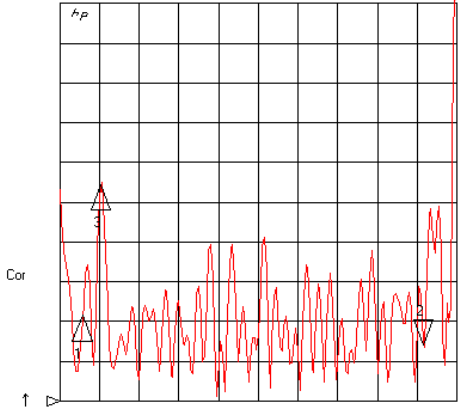
外形尺寸 Outline Drawing:

Unit: mm



8 Apr 2020 06:20:53

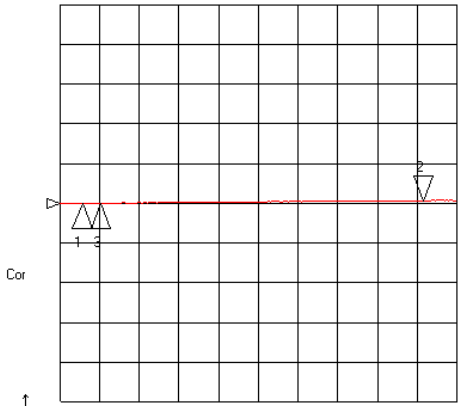
CH1 SWR 100 m / REF 1
S11 2 : 1.1422 6.000 000 000 GHz



CH1 Markers
1 : 1.2156
800 .000 MHz
3 : 1.5454
1.07985 GHz

START 450 .000 MHz STOP 6500 .000 MHz

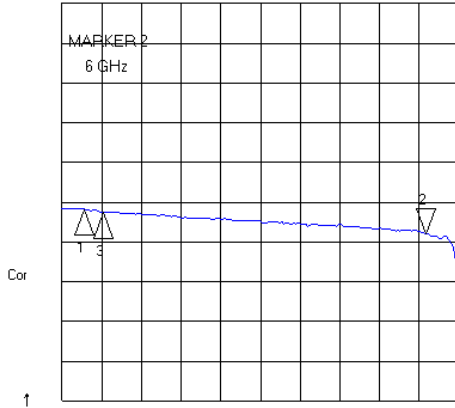
CH3 PHA 15 ° / REF 0 °
S12/M 2 : 972 .97 m ° 6.000 000 000 GHz



CH3 Markers
1 : 125 .98 m °
800 .000 MHz
3 : 116 .85 m °
1.07985 GHz

START 450 .000 MHz STOP 6500 .000 MHz
2002-1-1 03:15:45

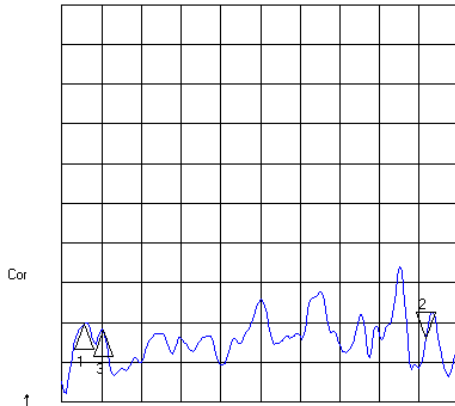
CH2 LOG 4.8 dB / REF -12 dB
S21 2 : -15 .757 dB 6.000 000 000 GHz



CH2 Markers
1 : -12 .883 dB
800 .000 MHz
3 : -13 .243 dB
1.07985 GHz

START 450 .000 MHz STOP 6500 .000 MHz

CH4 SWR 100 m / REF 1
S22 2 : 1.1612 6.000 000 000 GHz



CH4 Markers
1 : 1.1992
800 .000 MHz
3 : 1.1811
1.07985 GHz

START 450 .000 MHz STOP 6500 .000 MHz