

Part No.: TC-60180-10S

10dB Directional Coupler SMA- Female 50Ω 6000-18000 MHz

电气特性 Electrical:

工作频率 Frequency Range: 6-18GHz
 耦合度 Coupling: $10 \pm 1.0\text{dB}$
 插入损耗 Insertion Loss: $\leq 1.0\text{dB}$
 驻波 VSWR: $\leq 1.5:1$
 方向性 Directivity: $\geq 12\text{dB}$
 耐功率 Power Handling: 30Watt
 阻抗 Impedance: 50Ω

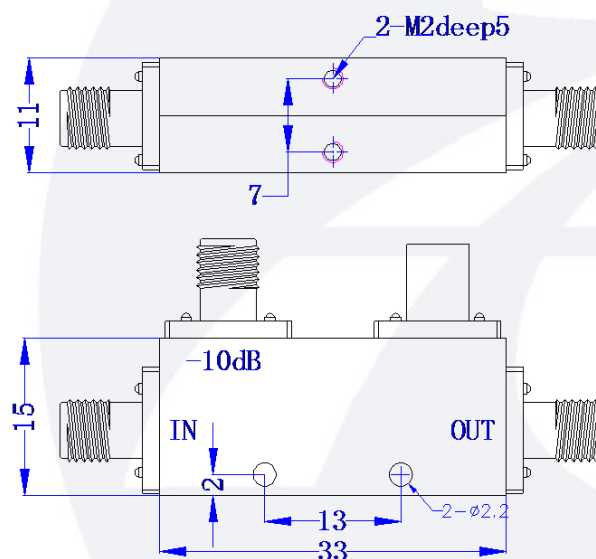


机械特性 Mechanical:

温度范围 Temperature Range: $-40^{\circ}\text{C} - +80^{\circ}\text{C}$
 接口 Connectors: SMA-Female
 相对湿度 Relative Humidity: 0 ~ 90%

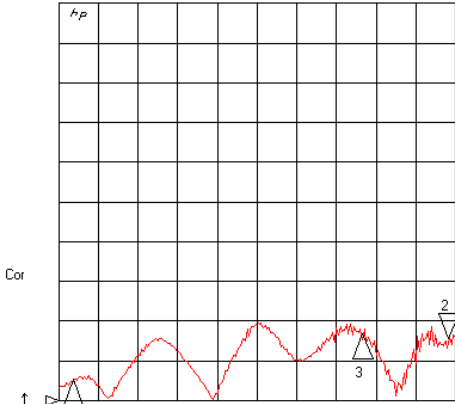
外形尺寸 Outline Drawing:

Unit: mm



16 Jun 2020 08:24:02

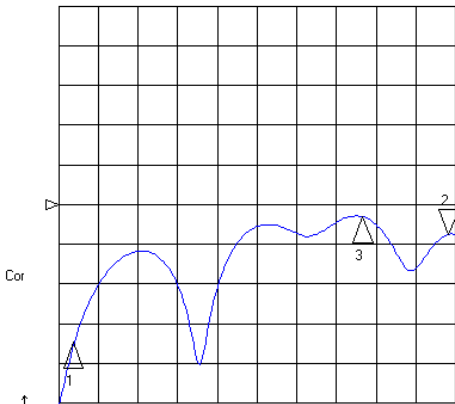
CH1 SWR 100 m / REF 1
S11 2 : 1. 1550 18 . 000 000 000 GHz



CH1 Markers
1 : 1. 0530
6. 00000 GHz
3 : 1. 1678
15 . 2523 GHz

START 5500 . 000 MHz STOP18200 . 000 MHz

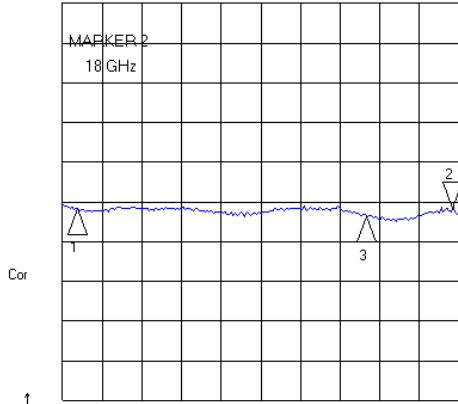
CH3 LOG 5 dB / REF -22 dB
MEM 2 : -25 . 746 dB 18 . 000 000 000 GHz



CH3 Markers
1 : -39 . 366 dB
6. 00000 GHz
3 : -23 . 544 dB
15 . 2523 GHz

START 5500 . 000 MHz STOP18200 . 000 MHz
2002-1-1 00:03:44

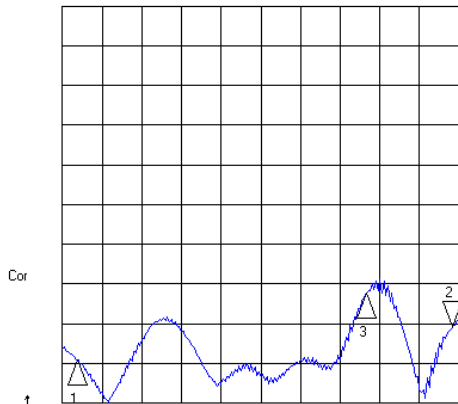
CH2 LOG 1 dB / REF -10 dB
S21/M 2 : -10 . 136 dB 18 . 000 000 000 GHz



CH2 Markers
1 : -10 . 171 dB
6. 00000 GHz
3 : -10 . 362 dB
15 . 2523 GHz

START 5500 . 000 MHz STOP18200 . 000 MHz

CH4 SWR 100 m / REF 1
S22 2 : 1. 1945 18 . 000 000 000 GHz



CH4 Markers
1 : 1. 1099
6. 00000 GHz
3 : 1. 2784
15 . 2523 GHz

START 5500 . 000 MHz STOP18200 . 000 MHz