

Coaxial Fixed Attenuator

1.0mm Female&Male/DC-110GHz

Model:TAXXA1-1.0-110A

TAXXA1-1.0-110A is a 3/5/6/10 dB coaxial attenuator that is used in millimeterwave systems and operates from DC to 110 GHz.

Features:

- Operating Frequency DC to 110 GHz
- Broadband Coverage
- Lost Cost

Applications:

- Test Lab
- Instrumentations
- System Integration

电气特性 Electrical Characteristics:

参数 Parameter	Min	Typ	Max	单位 Units
频率范围 Frequency Range	DC		110	GHz
衰减范围 Attenuation Range		3(+1.8/-1.5)		dB
		5(+1.8/-1.5)		dB
		6(+1.8/-1.5)		dB
		10(+1.5/-1.2)		dB
驻波 VSWR			1.6	:1
阻抗 Impedance		50		Ohms
射频功率值 RF Power Rating	1 Watts Average at 25°C PEAK: 10 Watts(5 μs pulse width, 5% duty cycle)			

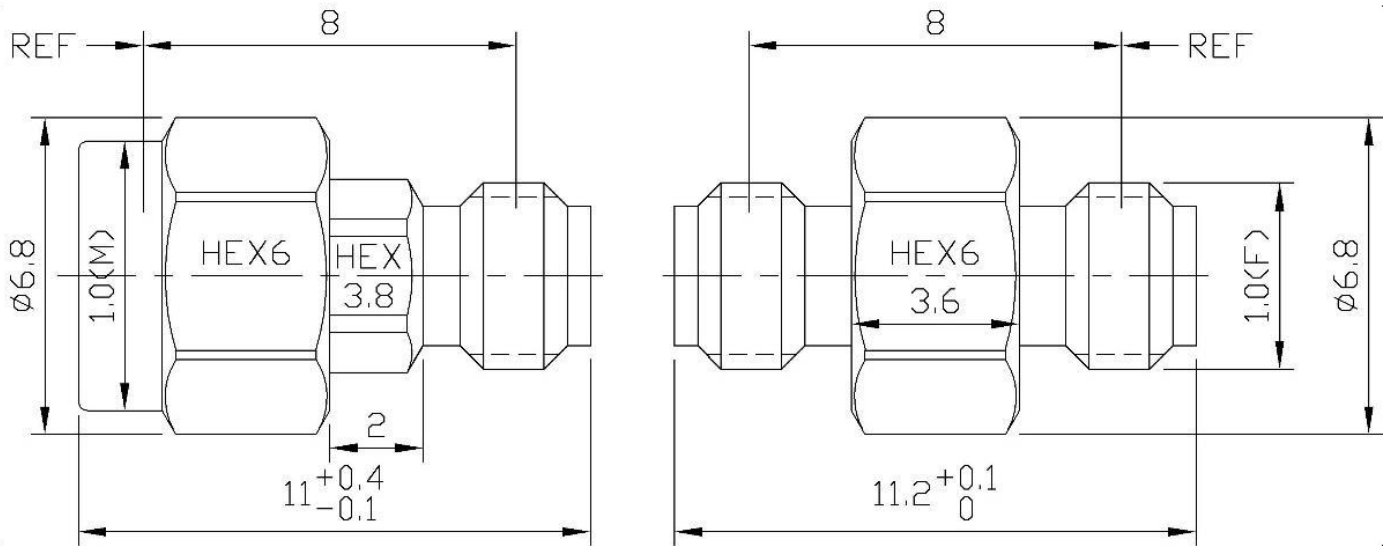
*Note: Average power linearly decreases to 0.1W when temperature rises to 100°C.

环境和机械特性 Environmental And Physical Characteristics:

类型 Description	参数 Parameter	单位 Units
操作温度 Operating Temperature	-55 To +125	°C
壳体材质 Body Material	Stainless steel	
绝缘体材质 Insulators	PEI	
内导体 Inner Conductor	Gold plated beryllium bronze	
接口 Connectors	1.0mm Female/Male	
重量 Weight	2	g

外形图 Outline Drawing:

Unit:mm



ESD Protection: Strictly adhere to ESD precautions to prevent electrostatic damage.

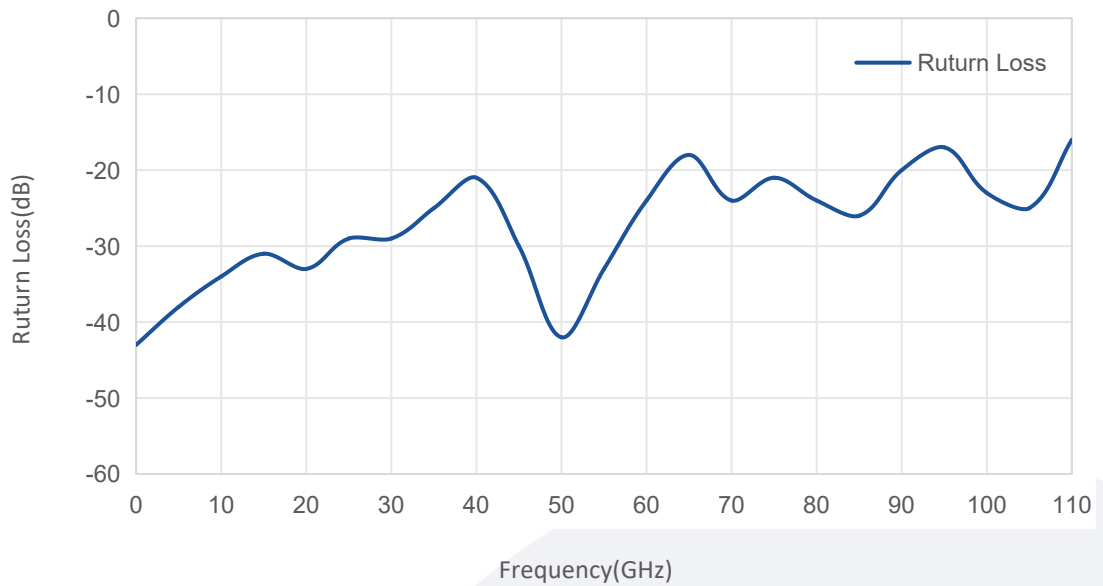
订货信息 Ordering Information:

标准型号 Base Number	描述 Description
TA03A1-1.0-110A	Coaxial Fixed Attenuator,3(+1.8/-1.5)dB Attenuation
TA05A1-1.0-110A	Coaxial Fixed Attenuator,5(+1.8/-1.5)dB Attenuation
TA06A1-1.0-110A	Coaxial Fixed Attenuator,6(+1.8/-1.5)dB Attenuation
TA10A1-1.0-110A	Coaxial Fixed Attenuator,10(+1.5/-1.2)dB Attenuation

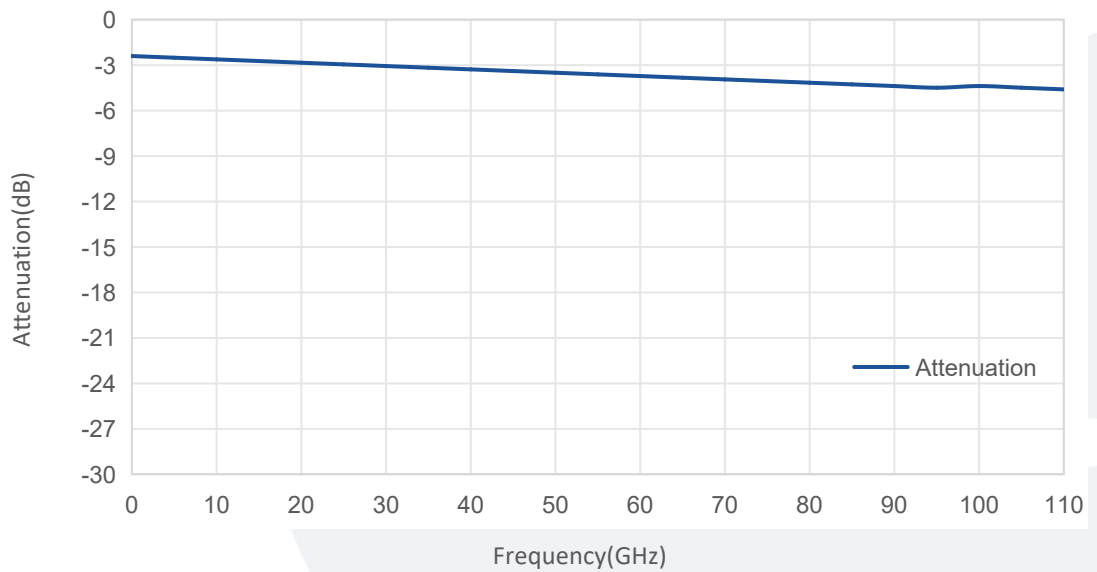
Typical Performance Data:

TA03A1-1.0-110A:

Return Loss vs Frequency



Attenuation vs Frequency

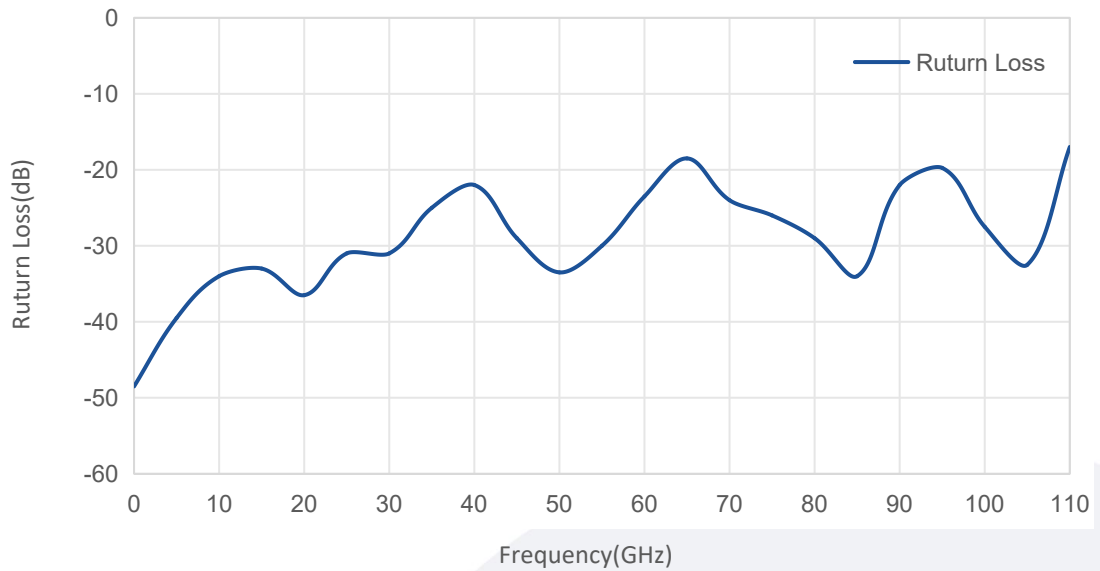


Note: Above data is for ref only, actual data may vary from unit to unit depending on operating environment and other factors like material lots etc.

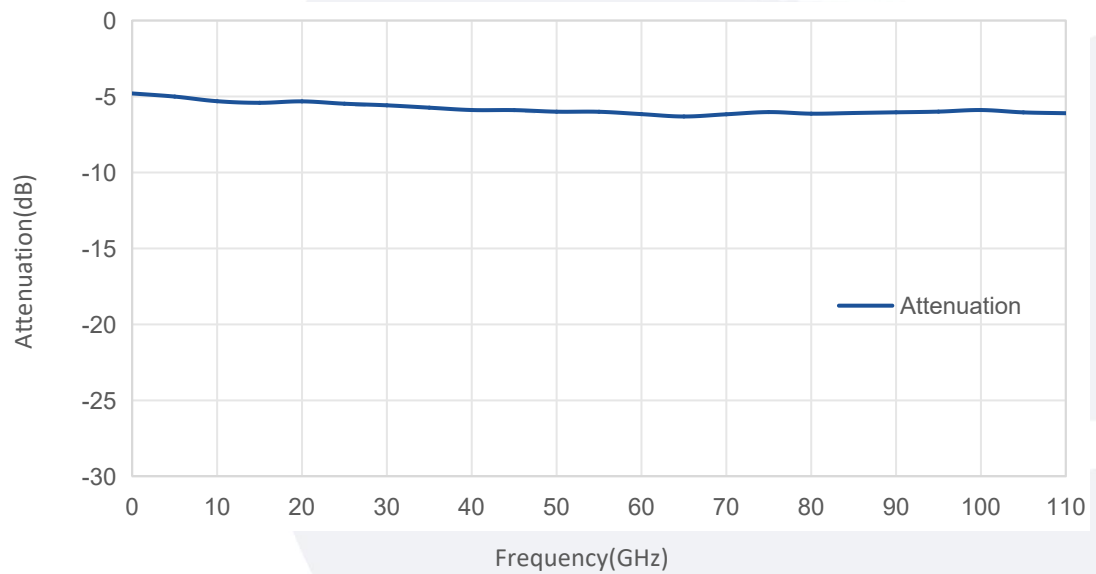
Typical Performance Data:

TA05A1-1.0-110A:

Return Loss vs Frequency



Attenuation vs Frequency

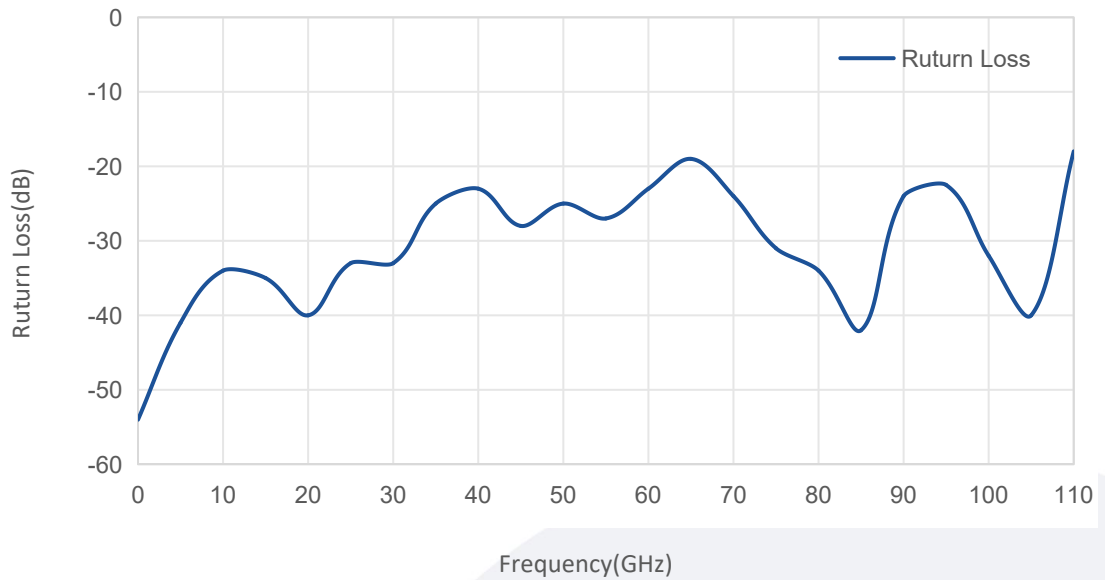


Note: Above data is for ref only, actual data may vary from unit to unit depending on operating environment and other factors like material lots etc.

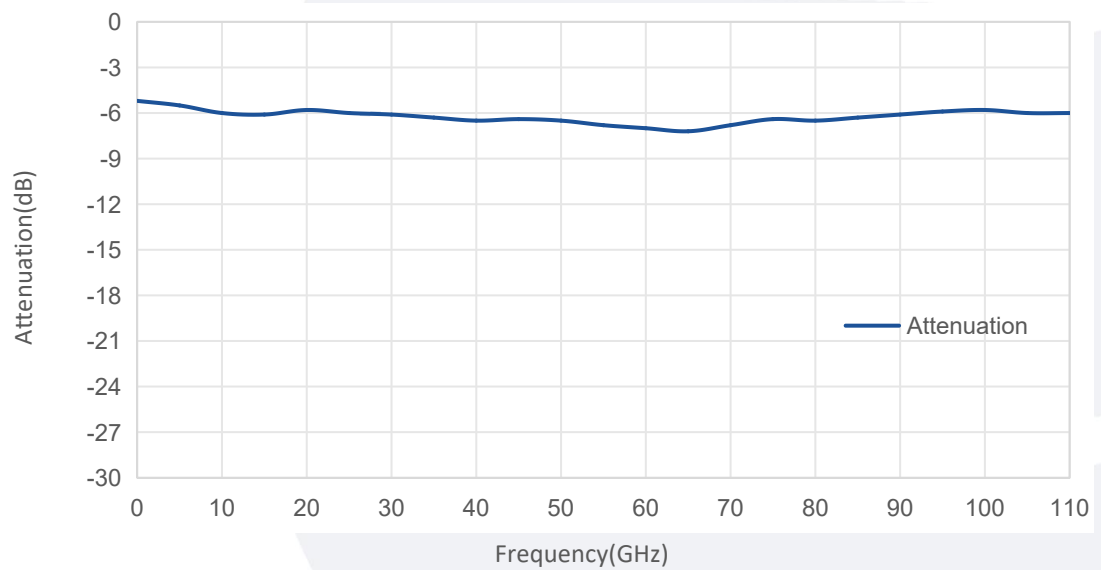
Typical Performance Data:

TA06A1-1.0-110A:

Return Loss vs Frequency



Attenuation vs Frequency

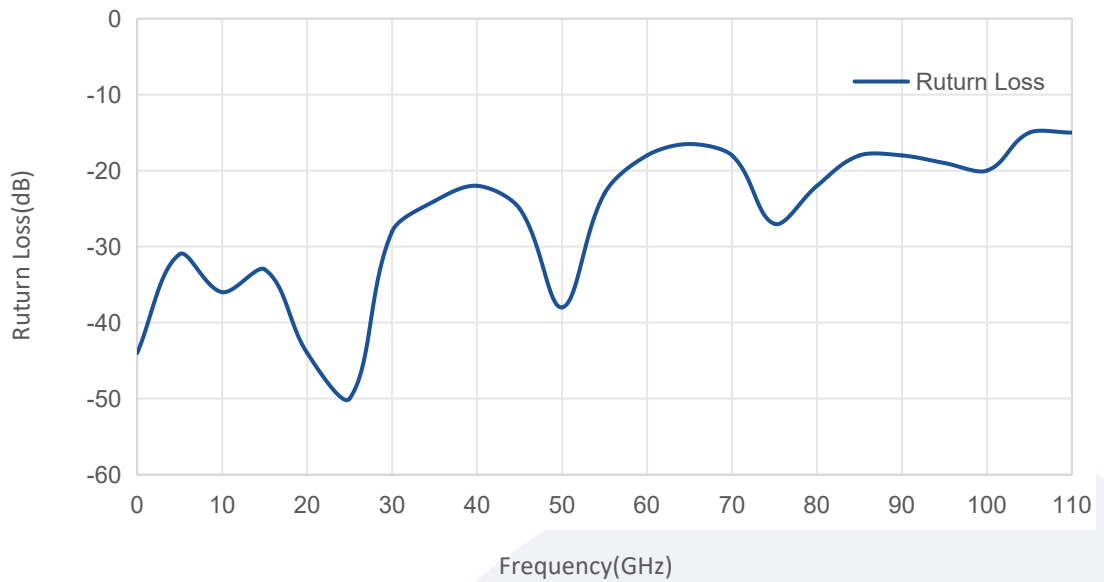


Note: Above data is for ref only, actual data may vary from unit to unit depending on operating environment and other factors like material lots etc.

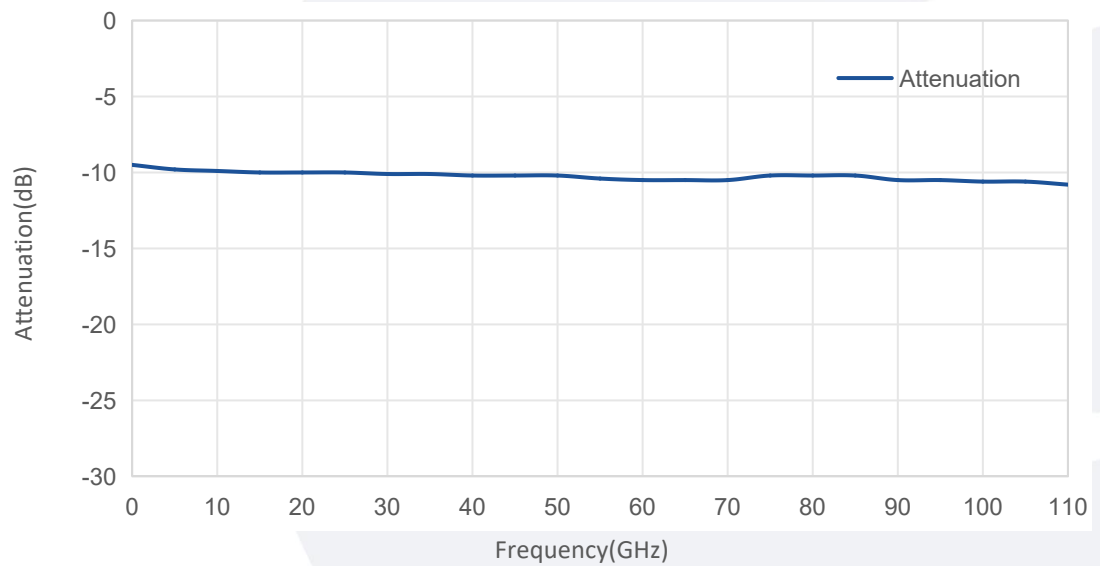
Typical Performance Data:

TA10A1-1.0-110A:

Return Loss vs Frequency



Attenuation vs Frequency



Note: Above data is for ref only, actual data may vary from unit to unit depending on operating environment and other factors like material lots etc.