

Model: TLHM-320360-0240-2.8

Subharmonically Mixer

RF:320-360 GHz ,LO:160-180 GHz,IF:DC-40GHz

Feature:

- Low LO Power Requirement
- Subharmonic Mixing
- Compact Package

电气特性 Electrical:

| 参数Parameter | Min. | Typ. | Max. | 单位Units |
|--------------------------|------|------|------|---------|
| RF频率 RF Frequency | 320 | | 360 | GHz |
| LO频率 LO Frequency | 160 | | 180 | GHz |
| IF频率 IF Frequency | DC | | 40 | GHz |
| LO 驱动功率 LO-Input power | | +10 | | dBm |
| 输入功率 Input Power | | | 0 | dBm |
| RF 驻波 RF VSWR | | 3.0 | | :1 |
| SSB 变频损耗 Conversion Loss | | -12 | | dB |

机械特性 Mechanical :

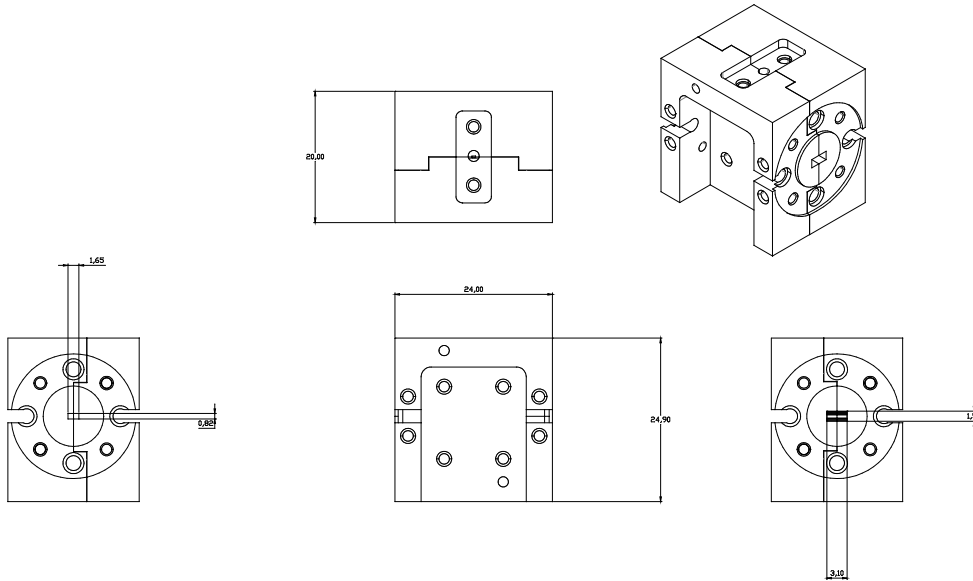
| 参数Parameter | 指标 Value | 单位Units |
|-------------------|---------------|---------|
| RF 接口RF Connector | WR-2.8/UG-387 | |
| LO接口LO Connector | WR-05/UG-387 | |
| IF接口 IF Connector | 2.92mm Female | |
| 尺寸 Size | 25*27.1*19.1 | mm |

绝对最大值 Absolute Maximum Ratings:

| 参数Parameter | 指标 Value |
|------------------------------|----------------------|
| RF 功率 RF Input Power | +0 dbm |
| ESD灵敏度 ESD sensitivity (HBm) | Class 0, passed 150V |

典型曲线 Typical Performance Data:

Unit: mm


**OBSERVE PRECAUTIONS
 ELECTROSTATIC SENSITIVE
 DEVICES**
温度环境 Environmental Conditions:

| 参数Parameter | Min. | Typ. | Max. | 单位Units |
|------------------------------------|---|------|------|---------|
| 操作温度 Operating Temperature | 0 | | +45 | °C |
| 存储温度 Non-operating Temperature | -25 | | +65 | °C |
| 相对湿度 Relative humidity | | 95 | | % |
| 海拔 Altitude | 50,000 | | | feet |
| 震动 Shock / Vibration(MIL-STD-810F) | 25g rms (15 degree 2KHz) endurance, 1 hour per axis | | | |
| 冲击 Shock(non operating) | 20G for 11msc half sin wave,3 axis both directions | | | |

订货信息 Ordering Information:

| 标准型号 Part Number | 描述 Description | 版本号Revision |
|----------------------|---|-------------|
| TLHM-320360-0240-2.8 | Subharmonically Mixer RF:320-340 GHz ,LO:160-180 GHz,IF:DC-40GHz | Rev.1.1 |